



Kit Pneumatic Motion®.
Customised, modular automation systems.

Custom, Configurable, Ready: three solutions for customised automation.

Industrial automation is developing continually, and requires the use of systems that suit production requirements. In many cases ad hoc solutions have to be identified, which can provide added value in terms of efficiency and productivity.

Metal Work and Metal Work Service can provide customers with highly-customised designs and proposals.

Thanks to considerable industry experience, our engineers actively liaise with customer technical departments to identify the best solutions for various application requirements in the field of industrial automation.

These close working relationships produce dedicated products developed for specific requirements, including the creation of new components, the modification of standard components, and the development of complex assembly systems.

The three Kit Pneumatic Motion® options make it possible to produce simple, complex, standard or customised solutions.

Kit Pneumatic Motion® Custom:

highly-customised industrial automation solutions created by our experts in conjunction with the customer.

Kit Pneumatic Motion® Configurable:

a selection of components and accessories that can be configured by the customer online to create motion control systems suited to customer requirements with one unique code.

Kit Pneumatic Motion® Ready:

quick and simple solution with all standard components provided in one kit to obtain simple pneumatic motion.



Kit Pneumatic Motion®. Custom.

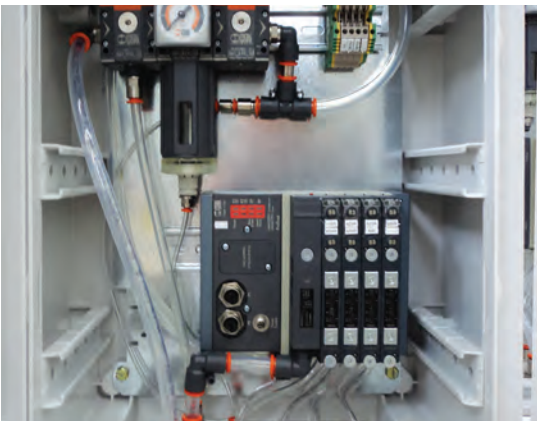
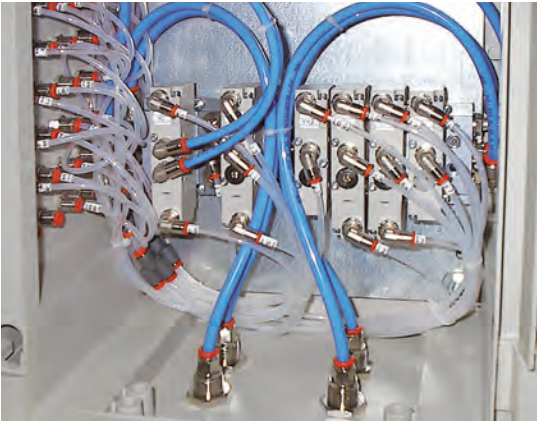
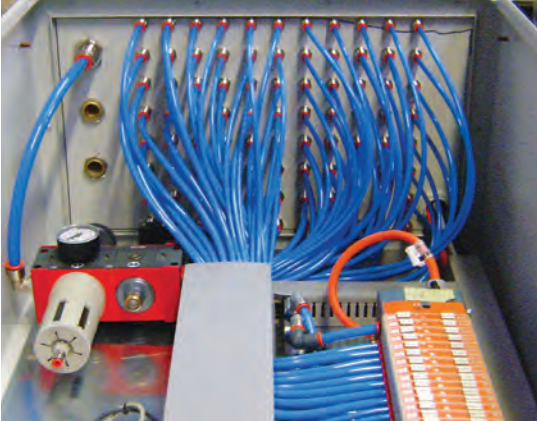


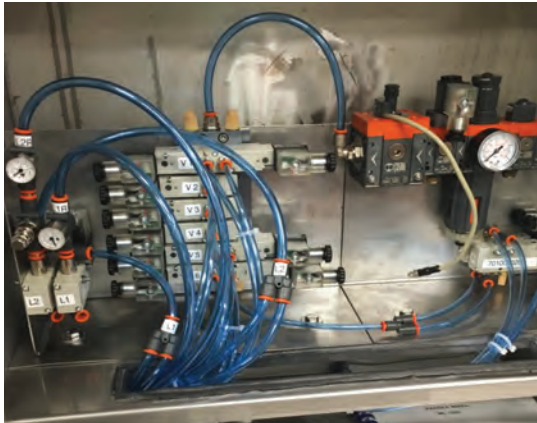
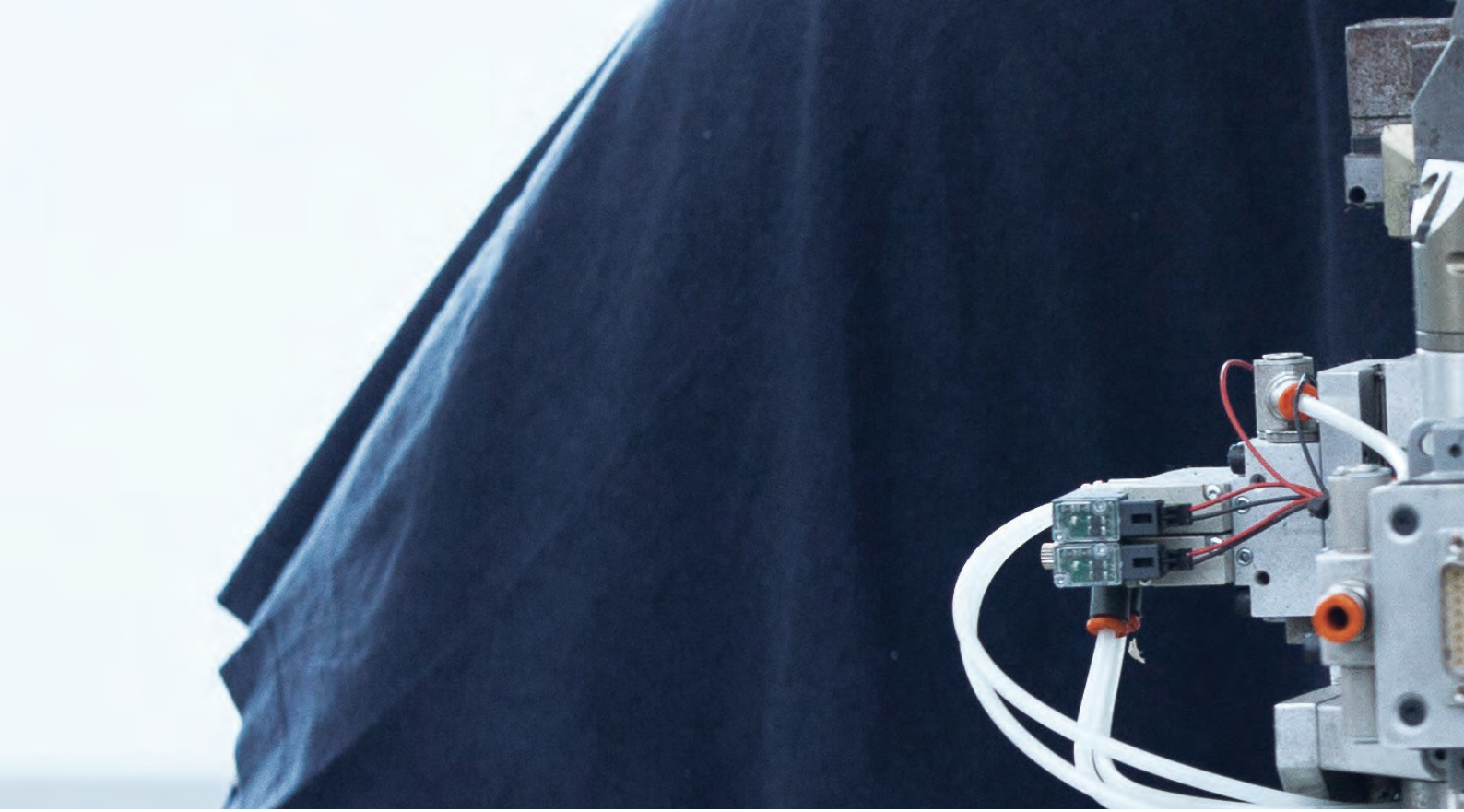
Metal Work and Metal Work can provide customised kits as a set of individual components or complete electro-pneumatic panels assembled and tested.

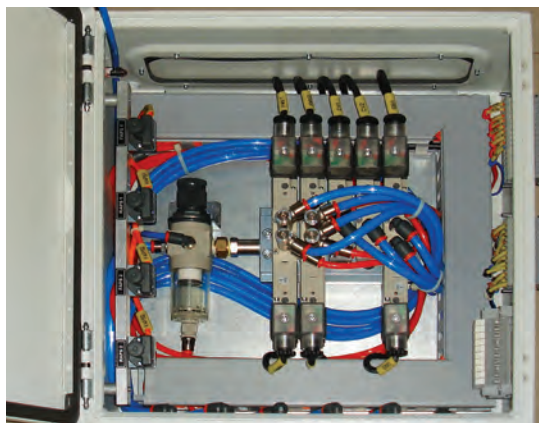
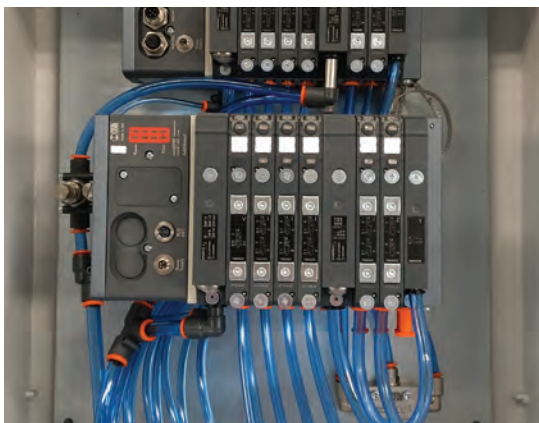
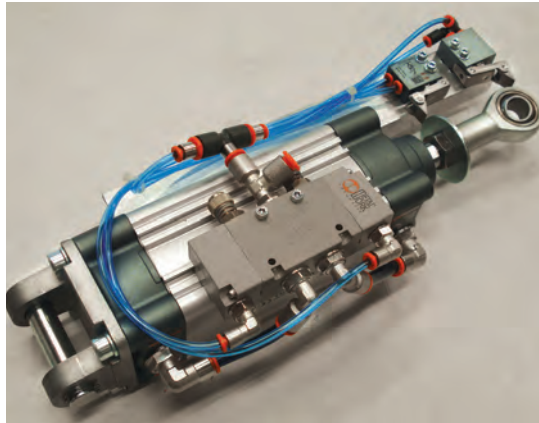
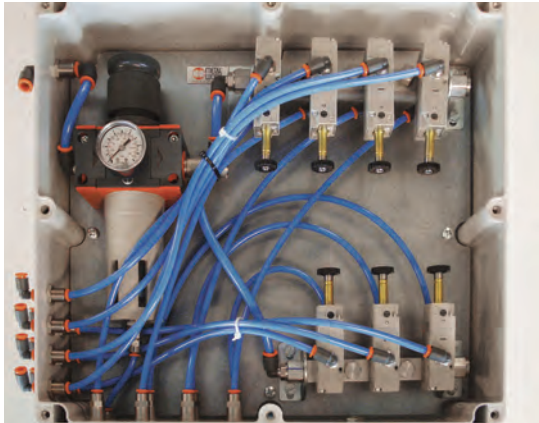
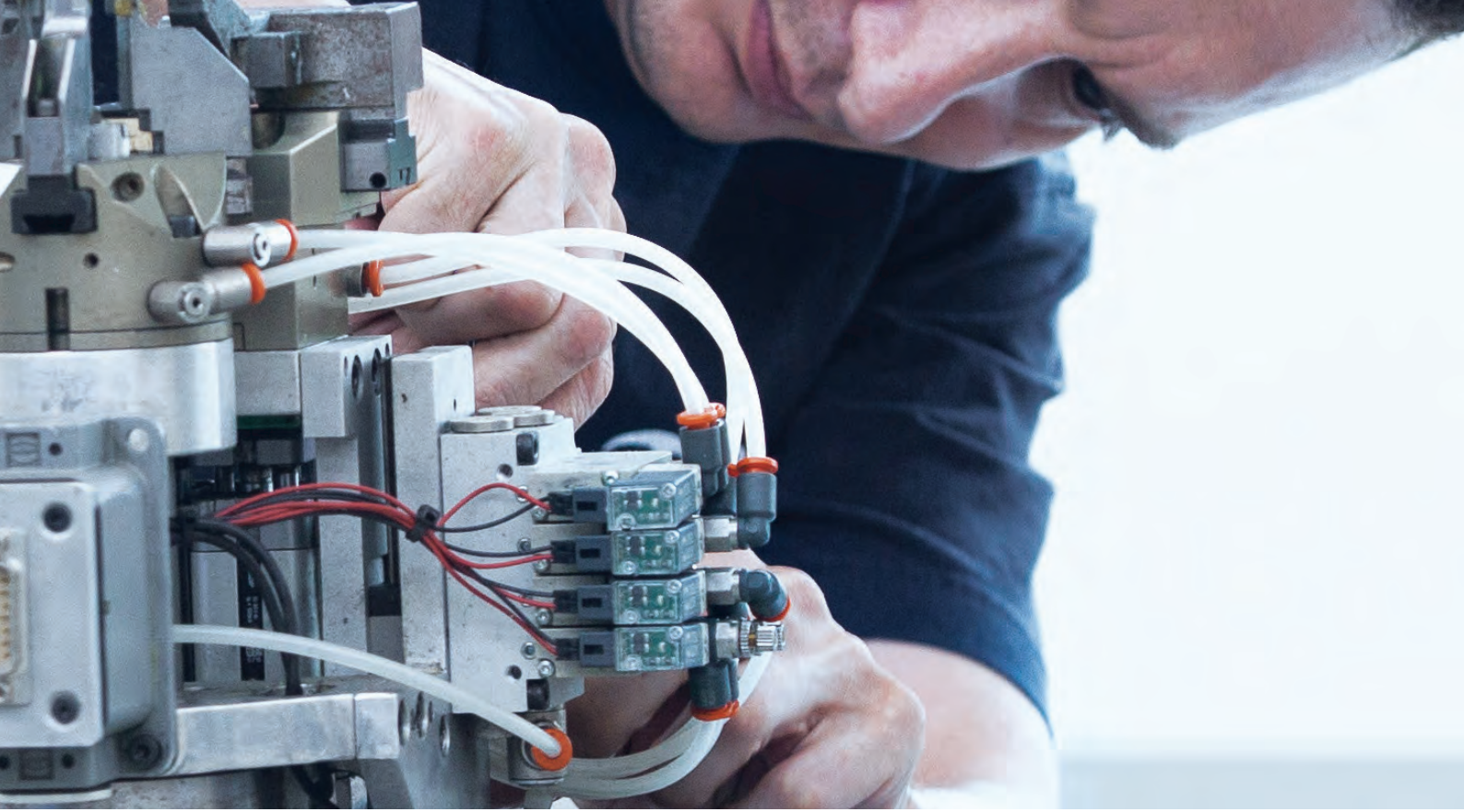
This service is convenient for many reasons:

- the customer defines a list of materials required for a machine or machine sub-unit, and can receive the components in one delivery ready for the machine assembly line.
- pneumatic or electro-pneumatic panels can be provided, with air treatment units, valves, clamps and terminals, couplings etc.
- automation sub-units can be provided ready to be inserted into machinery.

Some of the numerous products created.









Kit Pneumatic Motion®. Configurable.



An online configurator makes it possible to simply and quickly select a cylinder, valve and accessories in a basket of frequently used products.

At the moment ISO standard-compliant cylinders from \varnothing 12 to \varnothing 200 with any stroke length, electric or manual valves, cylinder accessories, sensors, fittings, flow regulators and pipes can be ordered.

The PMC kits have the benefit of reducing search and select times and having the right quantity of each component. Everything with just one code.



Kit Pneumatic Motion®. Ready.



These kits are extremely convenient for anyone wishing to produce simple pneumatic motion. One kit contains the cylinder, valves and all components to connect them.

This solution has various benefits:

- drastically reduces searching for and choosing the most suitable components, as they have already been selected by Metal Work;
- the right quantity of components is included; several items of some components are provided in the sales kit, such as fittings;
- very short delivery times.

Kits are divided into two versions:

- the JOYSTICK version, with manual control of cylinder motion;
- the ELECTRIC version, with electric control and position verification of the shaft via sensors.

The kits provided are the result of statistical sales analysis and therefore meet the requirements of the most common applications. Customised kits can be requested as individual components or as pre-assembled sets tested as required.



A Global Company

AUSTRALIA

BELGIUM

BRAZIL

CHINA

DENMARK

FINLAND

FRANCE

GERMANY

INDIA

INDONESIA

ITALY

MALAYSIA

NETHERLANDS

POLAND

PORTUGAL

UNITED KINGDOM

CZECH REPUBLIC

ROMANIA

RUSSIA

SLOVACCHIA

SOUTH AFRICA

SPAIN

SWEDEN

SWITZERLAND

THAILAND

UKRAINE

USA



Scan the code to
find your nearest.

